



Ultron

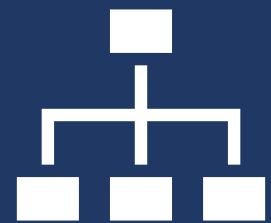
AiO Windows Tablet



Commercial Grade



All-in-One



Highly-expandible

Product overview

Ultron windows tablet Series is designed to be placed individually as a All-in-One kiosk. There are VESA mounting holes at the back of the tablet for easy installation.

Available in 10.1", 15.6", 21.5", 32" widescreen



Ultron All-in-One Windows Tablet

		ULT 101PART#J1900	ULT156 PART#J1900	ULT215 PART#J1900
Screen size		10.1"	15.6"	21.5"
Panel info.	Resolution	1280 x 800	1920 x 1080	
	Brightness	350 cd/m ²	220 cd/m ²	220 cd/m ²
	Contrast ratio	800:1	800:1	1000:1
	Aspect Ratio	16:10	16:9	
	Active Display Area	134.8 x 216.2 mm	344.16 x 193.59 mm	476.06 x 267.786 mm
	Viewing angle	H:170°/ V:170°	H:178°/ V:178°	H:170°/ V:170°
	Touch Tech.	10 point cap touch (reflective glass)		
CPU & System	CPU	Intel Celeron J1900 (Quad Core)		
	Base Frequency	2.0 GHz		
	CPU Turbo Boost	2.42 GHz		
	CPU Cache	2MB		
	BIOS	AMI 8MB UEFI BIOS		
RAM	RAM	4GB DDR3L @1333 MHz (upgradable)		
ROM	Storage	32GB SSD (upgradable)		
Software	OS	Pre-installed Windows 10 IoT core (License is optional)		
GPU	GPU chipset	Intel HD Graphic (Bay Trail, 688 - 854 MHz)		
	VGA	Yes		
	Display Port	No		
	HDMI	Yes		
	# of display supported	2		
Audio	Codec	Realtek HD ALC662		
	I/O	Line-out x 1, Mic-in x 1		
	Speaker	5W x 2		
Ethernet	Controller	Realtek RTL8111F Gigabit LAN		
	Connector	2 x RJ45		
	Wake on LAN	Yes		
	vPro/ AMT	No		
Storage	Slot	1 x mSATA/ SATA 2.0; 1 x SATA2.0		
Housing	Material & color	Metal housing with Matte black paint		
I/O	USB 2.0	1		
	USB 3.0	1		
	Audio	Line-out x 1; Mic-in x 1		
	LAN	2		
	HDMI	1 (HDMI1.4)		
	Display port	0		
	VGA	1		
Upgradable I/O	USB2.0	4		
	RS232	6 (COM2 able to change to RS485) (Only COM2 & 4 with power supply)		
	RS485	1 (switch from COM2)		
	PS/2	1 (Keyboard or Mouse)		
	GPIO	8		
	LPT	1		
AV capability	Camera	Front Facing Camera 2/5 MP fixed focus (Optional)		
Hardware monitor	Sensor	CPU temperature sensor; Voltage sensor; Watchdog; Plug and Start		
	Included in Box	Ultron open frame tablet, Power Adaptor, Power cable		
	Consumption	TBC	TBC	TBC
	Power input	12V 5A		
	Operating	Operating: 32°F to 104°F (0°C to 40°C); Storage: -4°F to 122°F (-20°C to 50°C)		

	Environment	Operating: 20%-80%; Storage: 10%-95%		
	Certification	CE, FCC, ROHS		
	Language	Multi language		
	VESA	VESA 75		VESA 100
Dimension	Size (W x H x D)	250 x 170 x 50.3 mm	290 x 251 x 34.7 mm	534 x 322 x 48 mm
	Product Weight	2 KG	2.7KG	5KG
	Giff Box Size	385 x 222 x 80 mm	444 x 348 x 112 mm	580 x 420 x 110 mm
	Master Carton Size	470 x 400 x 355	462 x 375 x 356 mm	601 x 450 x 370 mm
	Master Carton Weight	24 KG	12 KG	19KG
	Unit/Master carton	8pcs	3pcs	3pcs

*see dimensional drawings for details

Options information

Option	Type	Remarks
3G/4G module	Mini-PCI-e add-on	WCDMA / HSDPA 2100 / 1900 / 850 (900) MHz GSM / GPRS / EDGE 850 / 900 / 1800 / 1900 MHz
Windows 10 IoT core license	/	/
RAM	Extra RAM	4/ 8GB
SSD	Mini-PCI-e add-on	64/ 128 GB
Front Camera	Extra PCB	2 Megapixel with Fixed Focus / 5Megapixel with Auto Focus
Barcode module	USB accessories	1D barcode/ 2D barcode
RFID / NFC module	USB accessories	ISO 14443 T=CL, T=CL, 1K/4K, ISO 18092
Printer	RS232/USB accessories	Receipt thermal printer

